

# MAP OF FALLS VIEW ADDITION TO OREGON CITY

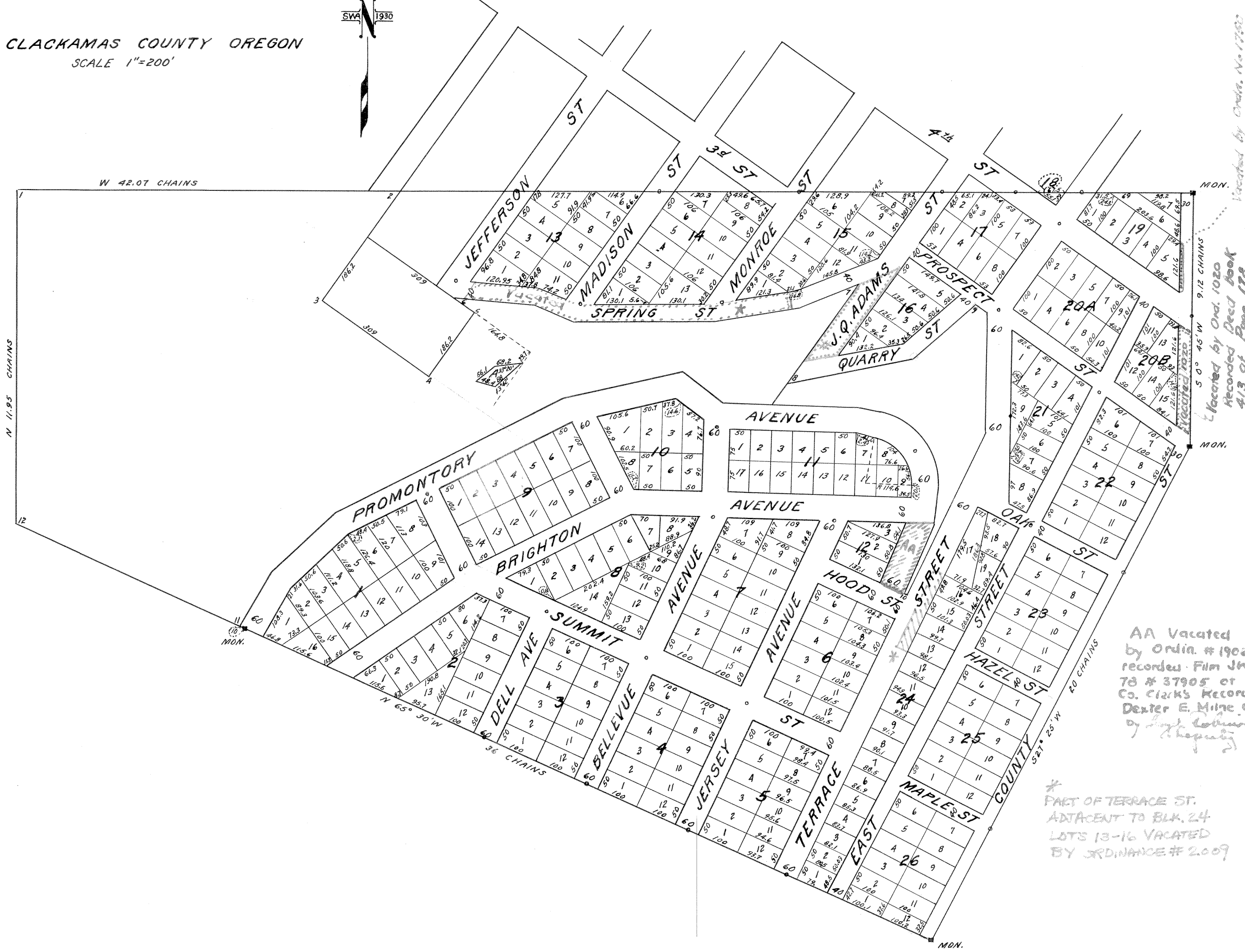
CLACKAMAS COUNTY OREGON  
SCALE 1"=200'



\* Spring St. Vacated  
by Ordinance No 1758  
record Film Jacket T2  
No 36677 of Clack. Co.  
Clerk's Records  
Dexter E. Milne, Co. Surveyor  
by Lloyd Johnsons Deputy

# PART OF JOHN Q ADAMS VACATED  
by Ordinance # 1862 recorded in  
FILM JACKET 76 No. 41629 of  
County Clerk's Records.  
Dexter E. Milne, Co. Surveyor  
by Lloyd Johnsons Deputy

Vacated by Ord. No 1758  
recorded Film Jacket T2  
No 36677 of Clack. Co.  
Clerk's Records  
Dexter E. Milne, Co. Surveyor  
by Lloyd Johnsons Deputy



AA Vacated  
by Ord. # 1906  
recorded Film JKT.  
78 # 37905 of  
Co. Clerk's Records  
Dexter E. Milne C.S.  
by Lloyd Johnsons Deputy

\* PART OF TERRACE ST.  
ADJACENT TO BLK. 24  
LOTS 13-16 VACATED  
BY ORDINANCE # 2009

MEMORANDA--THE BEGINNING POINT OF THE SURVEY IS AT A STONE MONUMENT, SET AT THE NORTH EAST CORNER OF THE DONATION CLAIM OF ARCHIBALD MCKINLEY, ADJOINING THE OREGON CITY CLAIM.  
THE GROUND REPRESENTED UPON THIS MAP IS INTENDED TO BE THE SAME AS THAT DESCRIBED IN THAT CERTAIN DEED RECORDED ON PAGE 605 IN BOOK NO. 33 OF THE RECORD OF DEEDS IN CLACKAMAS COUNTY, OREGON, THOUGH THE ACCURATE SURVEY MADE FOR THIS PLAT MAKES SOME SLIGHT VARIANCE AS TO COURSES AND DISTANCES. IN ADDITION TO MONUMENT AT BEGINNING CORNER THERE ARE STONE MONUMENTS PLACED, ONE AT ANGLE CORNER ON THE EAST LINE, ONE AT THE SOUTH EAST CORNER OF THE TRACT, AND ONE AT A POINT ON THE SOUTH BOUNDARY, 10 FEET INSIDE OF THE WEST LINE OF PROMONTORY AVENUE. THERE ARE ALSO DRIVEN IN THE GROUND AT ALL POINTS MARKED WITH SMALL RED CIRCLES A PIECE OF 1 1/4 INCH GAS PIPE ABOUT 28 INCHES IN LENGTH, SOME MORE, SOME LESS. ALL LOTS ARE THE SIZE DESIGNATED OR MARKED ON THIS MAP IN FEET AND TENTHS OF A FOOT. WHERE NOT MARKED THE SIZE MAY BE DETERMINED BY THOSE ADJOINING ON EITHER SIDE WHICH ARE MARKED. STREETS ARE OF VARIOUS WIDTHS AS MARKED IN FIGURES REPRESENTING FEET. NO PART OF THE GROUND NOT INCLUDED IN STREETS AND AVENUES AS MARKED, IS DEDICATED TO THE USE OF THE PUBLIC.  
THE OWNERS OF THE FEE IN THE LAND COVERED BY THIS MAP, RESERVE TO THEMSELVES AND THEIR ASSIGNS AND HEIRS FOREVER THE EXCLUSIVE RIGHT TO LAY PIPES AND CONVEY WATER ALONG THE STREETS AND AVENUES REPRESENTED, FOR SALE TO OWNERS OF LOTS, BUT THIS SHALL NOT PREVENT ANY MUNICIPAL CORPORATION IN WHICH THIS LAND MAY BE INCLUDED FROM LAYING SUCH PIPES AS IT MAY DEEM PROPER FOR SUCH PURPOSE, WHICH MAY BE THE PROPERTY OF SUCH CORPORATION, SO AS TO NOT INTERFERE WITH THE RIGHT HEREIN BEFORE RESERVED.  
WITH THE FOREGOING RESERVATION ALL STREETS AND AVENUES AS MARKED ARE DEDICATED TO THE USE OF THE PUBLIC.  
IN WITNESS WHEREOF WE, M.A. STRATTON AND HELEN L. STRATTON HUSBAND AND WIFE, THE OWNERS OF SAID LAND, DO HEREBY SET OUR HANDS AND SEALS THIS 15TH DAY OF AUGUST 1889.

IN PRESENCE OF  
CLARA LESER }  
W. C. JOHNSON }

M. A. STRATTON SEAL  
HELEN L. STRATTON SEAL

STATE OF OREGON }  
COUNTY OF CLACKAMAS } SS

ON THIS 15TH DAY OF AUGUST A. D. 1889 BEFORE ME A NOTARY PUBLIC IN AND FOR SAID COUNTY AND STATE, PERSONALLY CAME M. A. STRATTON AND HELEN L. STRATTON, HUSBAND AND WIFE, BY ME KNOWN TO BE THE IDENTICAL PERSONS DESCRIBED IN AND WHOSE NAMES ARE SUBSCRIBED TO THE FOREGOING MAP AND MEMORANDA THEREON, AND ACKNOWLEDGED THAT THEY EXECUTED THE SAME FREELY AND VOLUNTARILY.  
IN WITNESS WHEREOF I DO HERETO SET MY HAND AND NOTARIAL SEAL THE DATE ABOVE WRITTEN.  
SEAL OF  
NOTARY  
W. CAREY JOHNSON  
NOTARY PUBLIC FOR OREGON

STATE OF OREGON }  
COUNTY OF CLACKAMAS } SS

I HEREBY CERTIFY THAT THE WITHIN INSTRUMENT WAS FILED FOR RECORD AUG. 13, 1889, AT 9 O CLOCK AND---MIN. A. M. REQUEST OF---AND RECORDED AUG. 13, 1889, IN BOOK---OF PLATS ON PAGE---  
H. H. JOHNSON, COUNTY CLERK  
CLACKAMAS COUNTY

STATE OF OREGON }  
COUNTY OF CLACKAMAS } SS

I, E. C. HACKETT, RECORDER OF SAID COUNTY, CERTIFY THE WITHIN AND FOREGOING TO BE A TRUE AND CORRECT COPY OF THE MAP NOW ON FILE IN MY OFFICE AND IN MY CARE AND CUSTODY. JUNE 25, 1930.  
E. C. Hackett  
COUNTY RECORDER

MAP  
OF  
FALLS VIEW ADDITION TO  
OREGON CITY  
CLACKAMAS COUNTY OREGON



Scale - 1 inch = 200 ft.

MEMORANDA: The beginning point of the survey is at a stone monument, set at the North East corner of the Donation Claim of Archibald McKinley, adjoining the Oregon City Claim.  
The ground represented upon this map is intended to be the same as that described in that certain deed recorded on page 605 in Book No. 33 of the Record of Deeds in Clackamas County, Oregon, though the accurate survey made for this plat, makes some slight variance as to courses and distances.

In addition to monument at beginning corner there are stone monuments placed, one at angle corner on the east line; one at the South East corner of the tract; and one at a point on the South boundary, 10 feet inside of the West line of Promontory Avenue.

There are also driven in the ground at all points marked with small red circles a piece of  $\frac{1}{4}$  inch gas pipe about 28 inches in length, some more, some less.

All lots are the size designated or marked on this map in feet and tenths of a foot. Where not marked the size may be determined by those adjoining on either side which are marked.

Streets are of various widths as marked in figures representing feet. No part of the ground not included in streets and avenues as marked is dedicated to the use of the public.

The owners of the fee in the land covered by this map, reserve to themselves and their assigns and heirs forever the exclusive right to lay pipes and convey water along the streets and avenues represented, for sale to owners of lots; but this shall not prevent any municipal corporation in which this land may be included from laying such pipes as it may deem proper for such purpose, which may be the property of such corporation, so as to not interfere with the right hereinbefore reserved.

With the foregoing reservation all streets and avenues as marked are dedicated to the use of the public.

In witness whereof we M. A. Stratton and Helen L. Stratton husband and wife the owners of said land do hereby set our hands and seals this 15<sup>th</sup> day of August 1889.

In presence of )  
Clara Leiser )  
W. C. Johnson )

M. A. Stratton (Seal)  
Helen L. Stratton (Seal)

State of Oregon ) ss.  
County of Clackamas)

On this 15 day of August A.D. 1889 before me a Notary Public in and for said County and State personally came M. A. Stratton and Helen L. Stratton husband and wife, by me known to be the identical persons described in and whose names are subscribed to the foregoing map and memoranda thereon, and acknowledged that they executed the same freely and voluntarily.

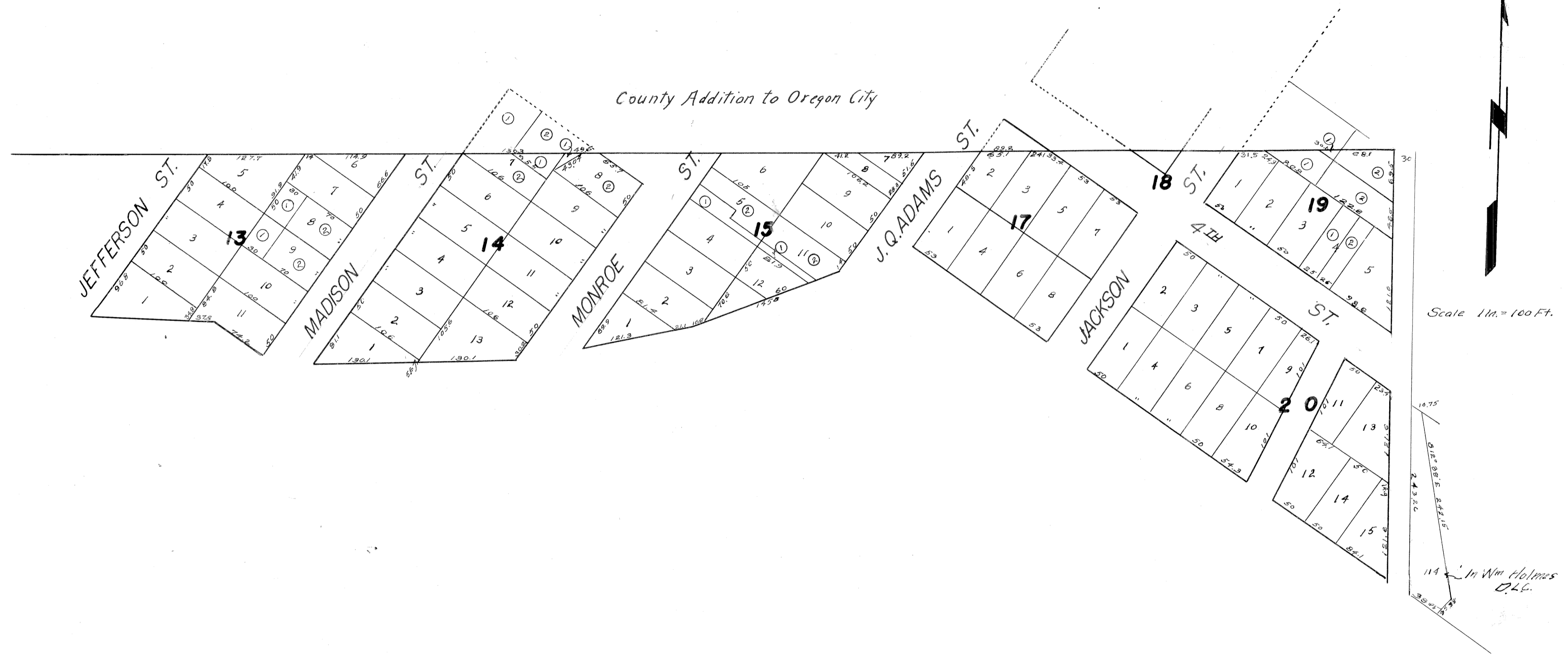
In witness whereof I do hereto set my hand and Notarial Seal the date above written.

Seal of Notary

W. Carey Johnson  
Notary Public for Oregon

August 1947  
Traced by R. Sommerfeldt

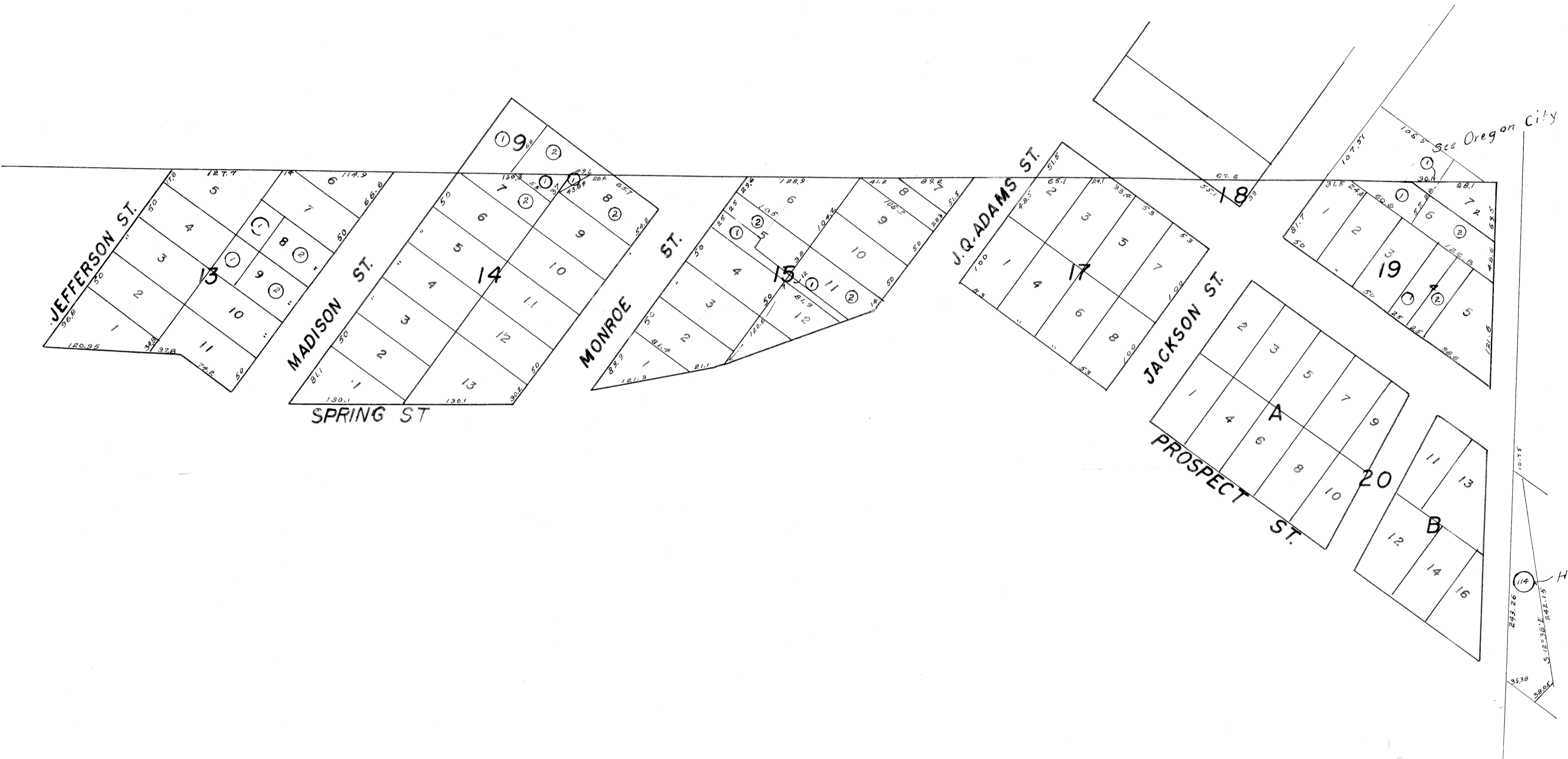
# FALLS VIEW



SN 1947-008  
E-343

E-343  
(SHEET 2 OF 3)  
40A

E 343



Assessment  
map

E 343

E 343

40 A